

Safe roads, Reliable journeys,
Informed travellers

EnvIS

Environmental Information System



What is EnvIS?

EnvIS is our Environmental Information System. It can be accessed on the Portal and sits in HAGIS (Highway Agency's Geographical Information System) and contains environmental data on our estate.

It can be used to identify what an asset is, where it is located, its condition and the broad management requirements.



Data contained within EnvIS has been collected by Service Providers and third parties (e.g. designation data from other Government Agencies) on seven environmental topics:

- Landscape
- Nature Conservation and Ecology
- Water
- Cultural Heritage
- Noise
- Air Quality
- Waste and Material Resources



“EnvIS is an easy to use GIS asset system that will provide a real improvement in the quality and availability of environmental data for the strategic road network”

Graham Dalton,
Highways Agency Chief Executive

Further information, help and support can be obtained from the EnvIS Management Team (EMT)
ICTService+@highways.gsi.gov.uk

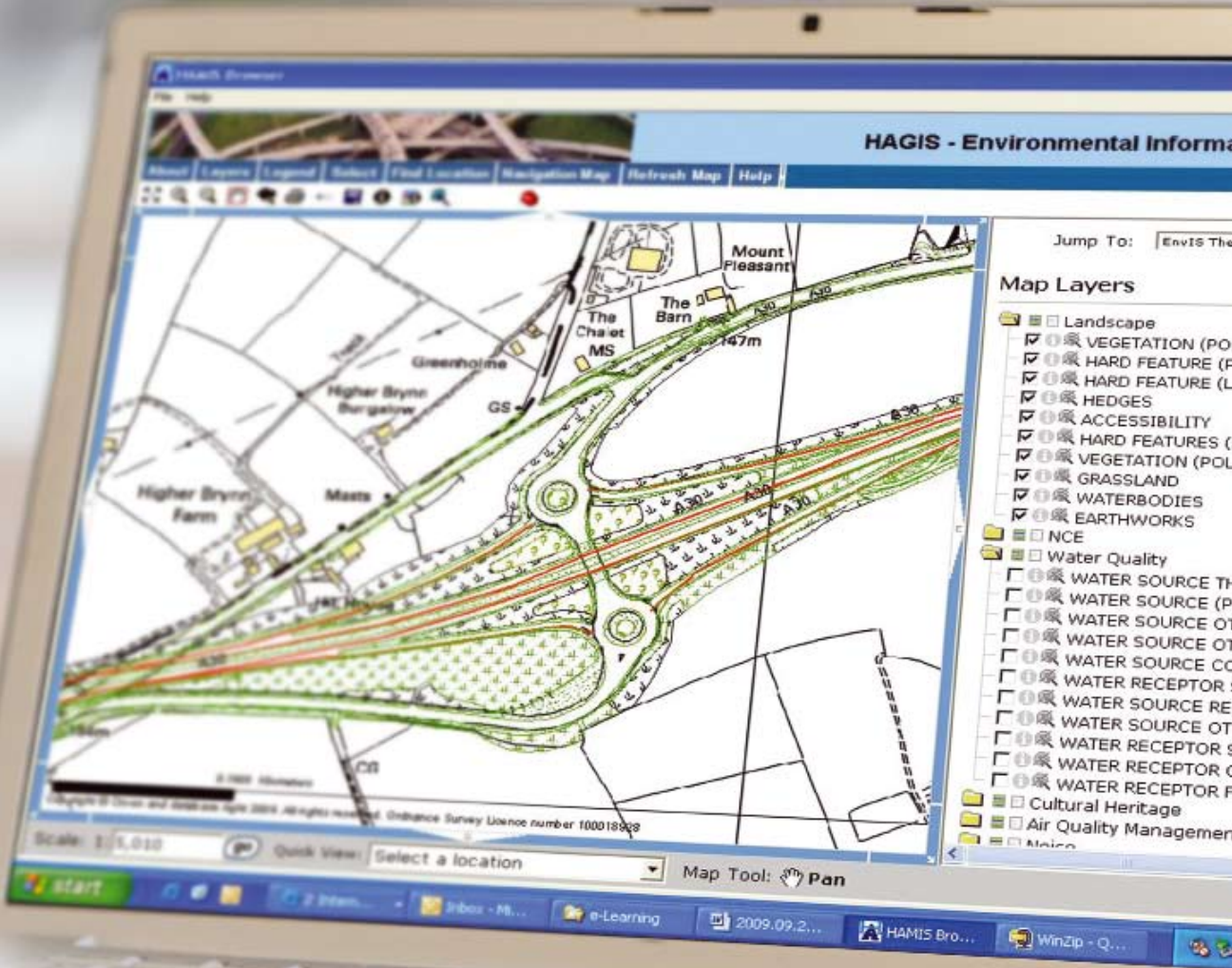
support can be obtained from the EnvIS
Further information, help and

Why do we need it?

Collecting and storing environmental data in a central location and in a consistent format provides important benefits for the environmental management of our estate, including:



- Assisting in evidence based decision making. By knowing the condition of an asset and its future management requirements, we can prioritise spending and target resources;
- Allowing the condition of the environmental assets on the network to be measured;
- Assisting with the measurement of our Service Provider performance;
- Demonstrating compliance with environmental legislation;
- Demonstrating delivery of targets and actions within our strategy and policy documents;
- Providing the initial baseline for environmental assessments.



HAGIS - Environmental Informa

Home Layers Legend Refresh Find Location Navigation Map Refresh Map Help

Jump To: Envis The

Map Layers

- Landscape
- VEGETATION (POL)
- HARD FEATURE (P)
- HARD FEATURE (L)
- HEDGES
- ACCESSIBILITY
- HARD FEATURES (P)
- VEGETATION (POL)
- GRASSLAND
- WATERBODIES
- EARTHWORKS
- NCE
- Water Quality
- WATER SOURCE TH
- WATER SOURCE (P)
- WATER SOURCE OT
- WATER SOURCE CO
- WATER RECEPTOR
- WATER SOURCE RE
- WATER SOURCE OT
- WATER RECEPTOR S
- WATER RECEPTOR O
- WATER RECEPTOR P
- Cultural Heritage
- Air Quality Management
- Mosaic

Scale: 1:1,010

Quick View: Select a location

Map Tool: Pan

Service Providers submit EnvIS data in the form of environmental inventory and environmental management information. Network Management Agents submit EnvIS data on a quarterly basis and Designers submit data according to three predetermined milestones. Network Operations and Major Projects Directorates will be responsible for ensuring their Service Providers are submitting data and will experience direct benefits from the increased volume and consistency of environmental data available.



What happens next?

ENVIS LAUNCH

December 2009

Envis will be officially launched to the business. Further information will be available on the Portal. The Launch will provide information to Envis users and the business as a whole on what Envis is, what it does and why.

TRAINING

January/February 2010

A roadshow of briefings will make its way to each of our regional offices, delivering key messages to users.

GO LIVE

April 2010

Go Live is the critical date after which all Service Providers are contractually required to comply with the Envis IAN 84/07 (and subsequent updates) and submit data following the requirements of the IAN.



Contacts:

Bob Levis: Senior Responsible Owner NO
0121 678 8214

Antonia Glyde:
EnvIS Project Director NetServ
0117 372 8323

Steve Woodward: MP Focal Point
0123 479 6603

EnvIS Management Team
e mail ICTService+@highways.gsi.gov.uk

i If you need help using this or any other Highways Agency information, please call **08457 50 40 30** and we will assist you.