

## Benefits enabled *by developments with final Application response in month*

### Social and economic benefits

|  |    |       |
|--|----|-------|
| New jobs   |    | 2,156 |
| New homes  |    | 7,492 |
| Economic injection during development work [cost of the development] | £m | 519   |
| Other economic activity [NPV of retail or residential rent]          | £m | 209   |

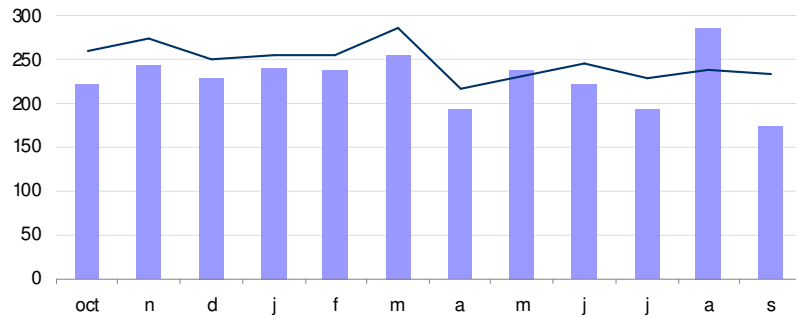
|  |           |     |
|--|-----------|-----|
| Safer roads [reduction in the cost of accidents] | £'000 pa  | 47  |
| Less congestion [through less trips]             | £'000 pa  | 415 |
| Carbon reduction [CO <sub>2</sub> ]              | £'000 pa  | 39  |
|  | tonnes pa | 417 |

## Other planning achievements *in month*

|                                     |      |    |
|-------------------------------------|------|----|
| Efficiency [median time in process] | days | 12 |
|-------------------------------------|------|----|

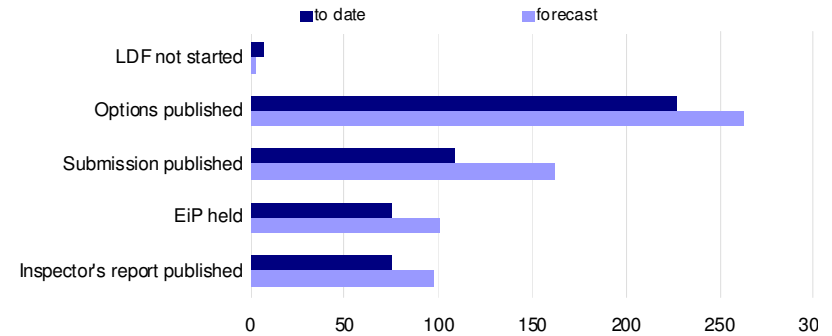
## Activities and Outcomes

Planning Applications number received (column) and responded to (line)  
last 12 months



|                                       |     |                  |
|---------------------------------------|-----|------------------|
| 21-day response rate % in month       | 100 | internal measure |
| Non-approval rate % in last 12 months | 0.5 |                  |

Local Development Framework core strategy status  
current and forecast for 3 months time



|   |            |
|---|------------|
| Typical agreement stage for core strategies | Submission |
| Core strategy documents published in month  | 2          |