

Benefits enabled *by developments with final Application response in month*

Social and economic benefits

New jobs		4,575
New homes		4,577
Economic injection during development work [cost of the development]	£m	586
Other economic activity [NPV of retail or residential rent]	£m	242

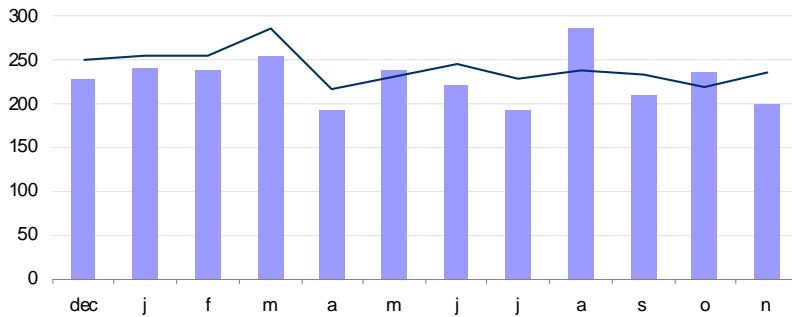
Safer roads [reduction in the cost of accidents]	£'000 pa	132
Less congestion [through less trips]	£'000 pa	1,156
Carbon reduction [CO ₂]	£'000 pa	110
	tonnes pa	1,162

Other planning achievements *in month*

Efficiency [median time in process]	days	13
-------------------------------------	------	----

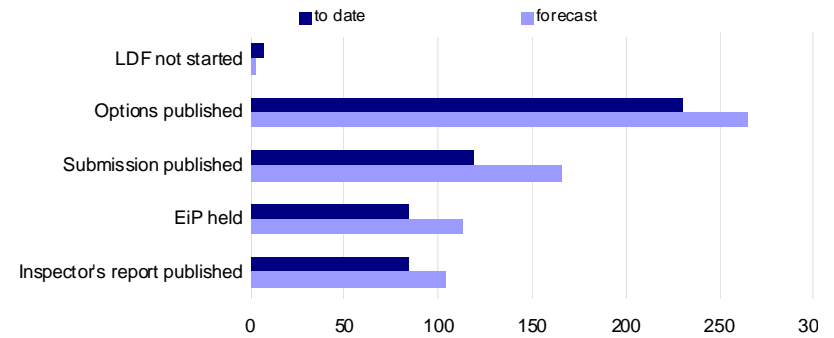
Activities and Outcomes

Planning Applications number received (column) and responded to (line)
last 12 months



21-day response rate % in month	100	internal measure
Non-approval rate % in last 12 months	0.5	

Local Development Framework core strategy status
current and forecast for 3 months time



Typical agreement stage for core strategies	Submission
Core strategy documents published in month	1