

Benefits enabled *by developments with final Application response in month*

Social and economic benefits

New jobs		4,502
New homes		1,618
Economic injection during development work [cost of the development]	£m	621
Other economic activity [NPV of retail or residential rent]	£m	266

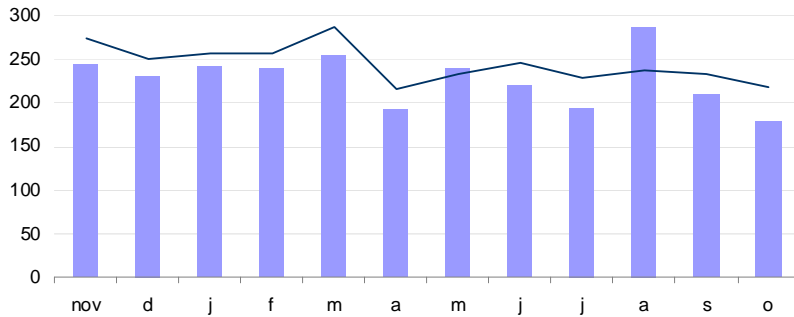
Safer roads [reduction in the cost of accidents]	£'000 pa	220
Less congestion [through less trips]	£'000 pa	1,919
Carbon reduction [CO ₂]	£'000 pa	182
	tonnes pa	1,928

Other planning achievements *in month*

Efficiency [median time in process]	days	11
-------------------------------------	------	----

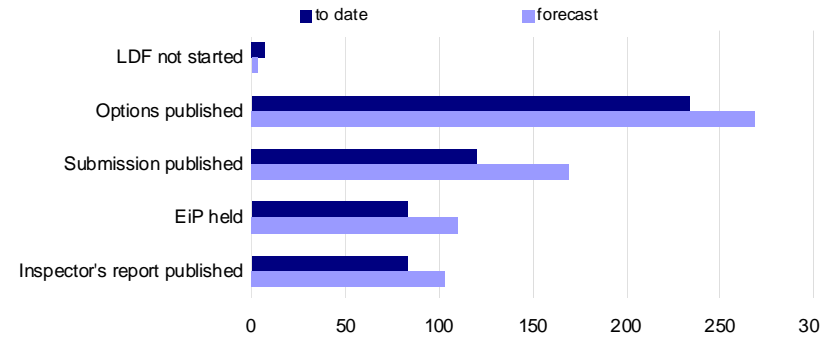
Activities and Outcomes

Planning Applications number received (column) and responded to (line)
 last 12 months



21-day response rate % in month	99.5	internal measure
Non-approval rate % in last 12 months	0.4	

Local Development Framework core strategy status
 current and forecast for 3 months time



Typical agreement stage for core strategies	Submission
Core strategy documents published in month	0