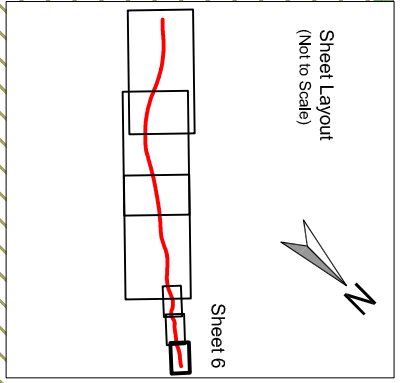


**LEGEND**

|  |                            |  |                        |  |                     |
|--|----------------------------|--|------------------------|--|---------------------|
|  | Visual Receptor Reference  |  | Substantial Adverse    |  | Existing vegetation |
|  | Year 15 (Winter)           |  | Moderate Adverse       |  | Arable              |
|  | Year 0                     |  | Slight Adverse         |  | Scrub Grassland     |
|  | Group of properties        |  | Negligible             |  | Rough Pasture       |
|  | Zone of Visual Influence   |  | Slight Beneficial      |  | Amenity Grassland   |
|  | Overhead transmission wire |  | Moderate Beneficial    |  | Golf Course         |
|  |                            |  | Substantial Beneficial |  | Existing Hedgerows  |

|  |                             |  |                              |
|--|-----------------------------|--|------------------------------|
|  | Key to Potential Effects    |  | Rights of Way                |
|  | Existing Landscape Features |  | Midshires Way                |
|  | Proposals                   |  | Existing Public Right of Way |
|  | Proposed Road Alignment     |  |                              |



THIS MAP IS REPRODUCED FROM THE ORDINANCE SURVEY MATERIAL WITH THE PERMISSION OF THE CONTROLLER OF HER MAJESTY'S STATIONERY OFFICE © CROWN COPYRIGHT. UNAUTHORISED REPRODUCTION INFRINGES CROWN COPYRIGHT AND MAY LEAD TO PROSECUTION OR CIVIL PROCEEDINGS. HIGHWAYS AGENCY 100013928 2008.

# A453 WIDENING M1 J24 TO A52 NOTTINGHAM