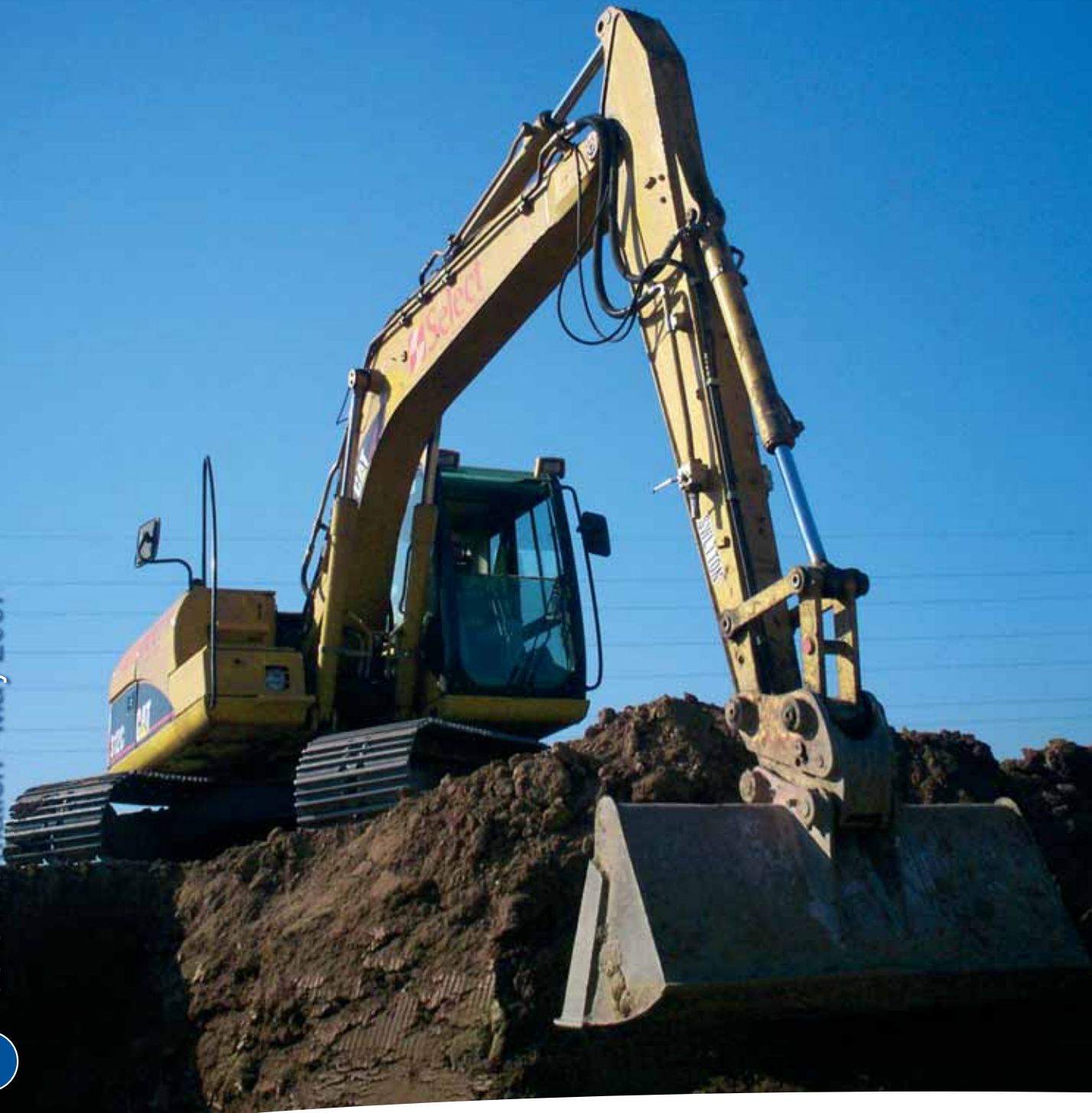


Improving Junction 6 | M62

Start of Works

Public information • May 2007



Why we need to improve the junction

The growing number of vehicles using Junction 6, at the busiest times of the day, is causing congestion and delay for drivers. The roundabout carries about 57,000 vehicles every day and around 13 per cent of those are heavy goods vehicles. We are expecting an increase in traffic as a result of regeneration in Merseyside, local development and expansion to John Lennon International Airport. We predict that the number of vehicles using the roundabout in 2009 will reach 64,000. If we don't improve the junction, congestion will worsen and journey times will become less reliable.

As well as struggling to cope with the volume of traffic at peak times, the roundabout also has poor facilities for pedestrians and cyclists who wish to cross the motorway.

The improvements will have the following benefits:

- reduced delays and congestion at the junction
- improved travel time reliability for traffic using the junction



Congestion at Junction 6 causes delays at peak times.

- less accidents at the junction
- improved accessibility for pedestrians and cyclists, creating potential for new long distance routes
- benefits to the local and national economy

We completed the statutory procedures more quickly than expected giving us the opportunity to start works 6 months early. We carried out tree clearance work during February and March and the main work started in early April. We expect to finish in autumn 2008.

What we are building

The scheme will provide two new 'free flow' links between the M62 and M57:

Link A - M57 Southbound to M62 Eastbound

- two lane, plus hard shoulder, link road
- passes under Windy Arbor Road
- two new structures
 - Windy Arbor Road Bridge
 - a new span to the currently disused Potters Pits Bridge

Link C - M62 Westbound to M57 Northbound

- single lane, plus hard shoulder, loop road
- passes under the realigned slip road from the roundabout to M62 westbound
- passes over Ox Lane footpath
- passes over the existing A5300 north bound slip road
- three new structures:
 - M62 Westbound slip road bridge;
 - Ox Lane underpass
 - A5300 slip road bridge.

We are also making improvements to the facilities for pedestrians and cyclists who want to cross the M62.

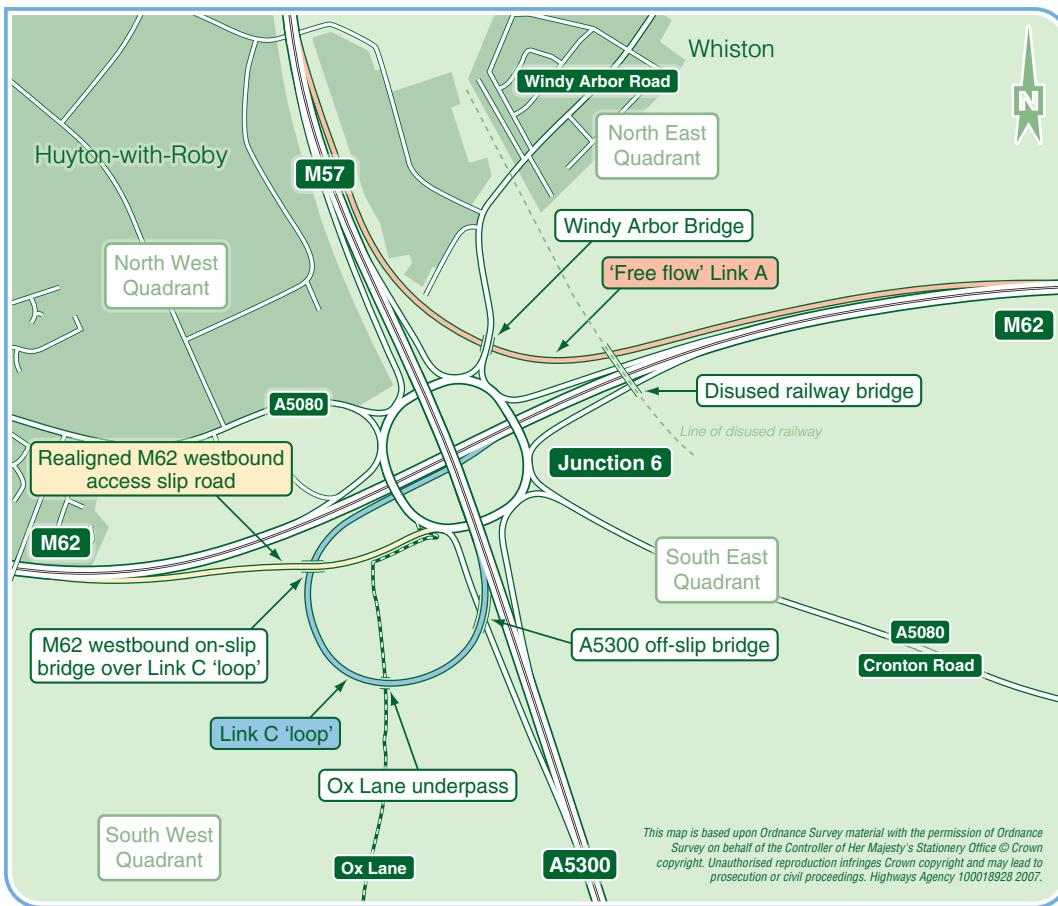


Diagram showing the two new 'free flow' link roads and other aspects of the improvements.

Potters Pits Bridge, which is currently unused, will be converted into a footpath/cycleway and create the opportunity for Knowsley MBC to extend the existing network of footpaths and cycleways in the area.

How will the works affect you?

During construction there will be some disruption to road users, local residents and wildlife. We aim to keep this to a minimum through good site management and construction practices, and appropriate mitigation measures.

Throughout the construction period the contractor will be required to protect sensitive areas and limit disturbance. This will include measures to control noise and dust, protect the local watercourses and groundwater, avoid pollution and protect flora and fauna.

During the construction it will be necessary to install temporary traffic management to provide a safe environment for the travelling public and our workforce. Whenever possible the existing number of lanes and speed limits will be maintained. We will enforce a reduced speed limit of 50mph on the A5300, M57 and M62 next to our workforce. During the temporary diversion of Windy Arbor Road a reduced speed limit of 30mph will be enforced between Fallows Way and Tarbock Island. Road closures will be scheduled for off-peak periods and diversions will be clearly signposted.

Site safety

Our construction sites are well fenced and have signs that warn of the dangers. Please help us to work safely by observing all warnings and keeping children and pets away.

Best practice

At the Highways Agency we are always looking for ways to improve how we work with our contractors, in this case Laing O'Rourke and their design consultant, Pell Frischmann.

To ensure that we benefit from their experience and skills, a new form of contract known as Early Contractor Involvement (ECI) has been introduced. This means that the contractors are appointed during the preparation stages of the project.

As a result of ECI much of the planning was done by both designer and contractor providing a more co-ordinated design benefiting from the contractor's previous experience of road building. This ultimately provides a quality scheme that should give best value for money.

Highways Agency Publications Code PR110/07

Highways Agency Publications, Manchester P070014.
© Crown copyright 2007. Printed on paper from a sustainable source.

Any questions?

If you would like to know more about the junction improvements, we are happy to answer any questions you may have. We have a Site Public Liaison Officer, Paul Steventon who can be contacted on telephone number **07717 348814** or by email at: **M62J6-TSCO@laingorourke.com**

You can also visit the site office at:

M62 Junction 6 Improvements Scheme
Project Offices
Windy Arbor Road
Whiston
Merseyside L35 1RB

Or, find out more by contacting us at:

Highways Agency
Major Projects Division
Room 710
City Tower
Piccadilly Plaza
Manchester M1 4BE

Telephone: 0161 930 5815

Got a question or comment?

08457 50 40 30*

email: ha_info@highways.gsi.gov.uk

24 hours a day, 365 days a year

Live traffic information

08700 660 115*

www.highways.gov.uk

24 hours a day, 365 days a year

*Calls from BT landlines to 0845 numbers will cost no more than 4p per minute and to 0870 numbers no more than 8p per minute, mobile calls usually cost more.

Safe driving at roadworks



During 2005, five workers were killed and 12 seriously injured in the course of their work on Highways Agency roads. This was the worst year since 1999.

For the safety of all road users and roadworkers, drivers approaching roadworks are advised to:

- Keep within the speed limit – it is there for your safety.
- Get into the correct lane in good time – don't keep switching.
- Concentrate on the road ahead, not the roadworks.
- Be alert for works' traffic leaving or entering roadworks.
- Keep a safe distance – there could be queues in front.
- Observe all signs – they are there to help you.

Remember that tiredness can kill. Take regular breaks from driving.